

FED. ROAD DIST. NO.	STATE	PROJ. NO.	FISCAL YEAR	SHEET NO.	TOTAL SHEETS
	OKLA.				

DESCRIPTION	REVISIONS	DATE

SECTION CORNER - O.D.O.T. D-22-466
 SET A #4 BAR WITH "CA 2054" CAP FOR CORNER.
 LOCATION WAS RE-ESTABLISHED USING EXISTING FENCE LINES RUNNING EAST, WEST, NORTH, AND SOUTH. ALSO USED EXISTING HIGHWAY PLANS. ALSO FOUND A #4 BAR WITH "SRA 794" CAP AT A POINT BEING EQUIDISTANT AND ONLINE WITH OPPOSING SECTION CORNERS. DID NOT ACCEPT THIS LOCATION BECAUSE OF THE METHOD USED TO SET IT AND IT DID NOT FIT SURROUNDING IMPROVEMENTS. NO OKLAHOMA CERTIFIED CORNER RECORD WAS ON FILE FOR THIS LOCATION.

SECTION CORNER - O.D.O.T. D-22-465
 SET A #4 BAR WITH "CA 2054" CAP FOR CORNER.
 LOCATION WAS RE-ESTABLISHED USING EXISTING IMPROVEMENTS IN THE AREA AND COMPARING TO GLO NOTES AND DISTANCES. NO OKLAHOMA CERTIFIED CORNER RECORD WAS ON FILE FOR THIS LOCATION.

SECTION CORNER - O.D.O.T. D-22-467
 FOUND AND ACCEPTED A #4 BAR. LOCATION IS IN AGREEMENT WITH OKLAHOMA CERTIFIED CORNER RECORD FILED IN 2010, 1996, AND 1979. THE REFERENCE MONUMENTS WERE FOUND AND VERIFIED.

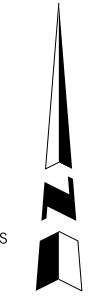
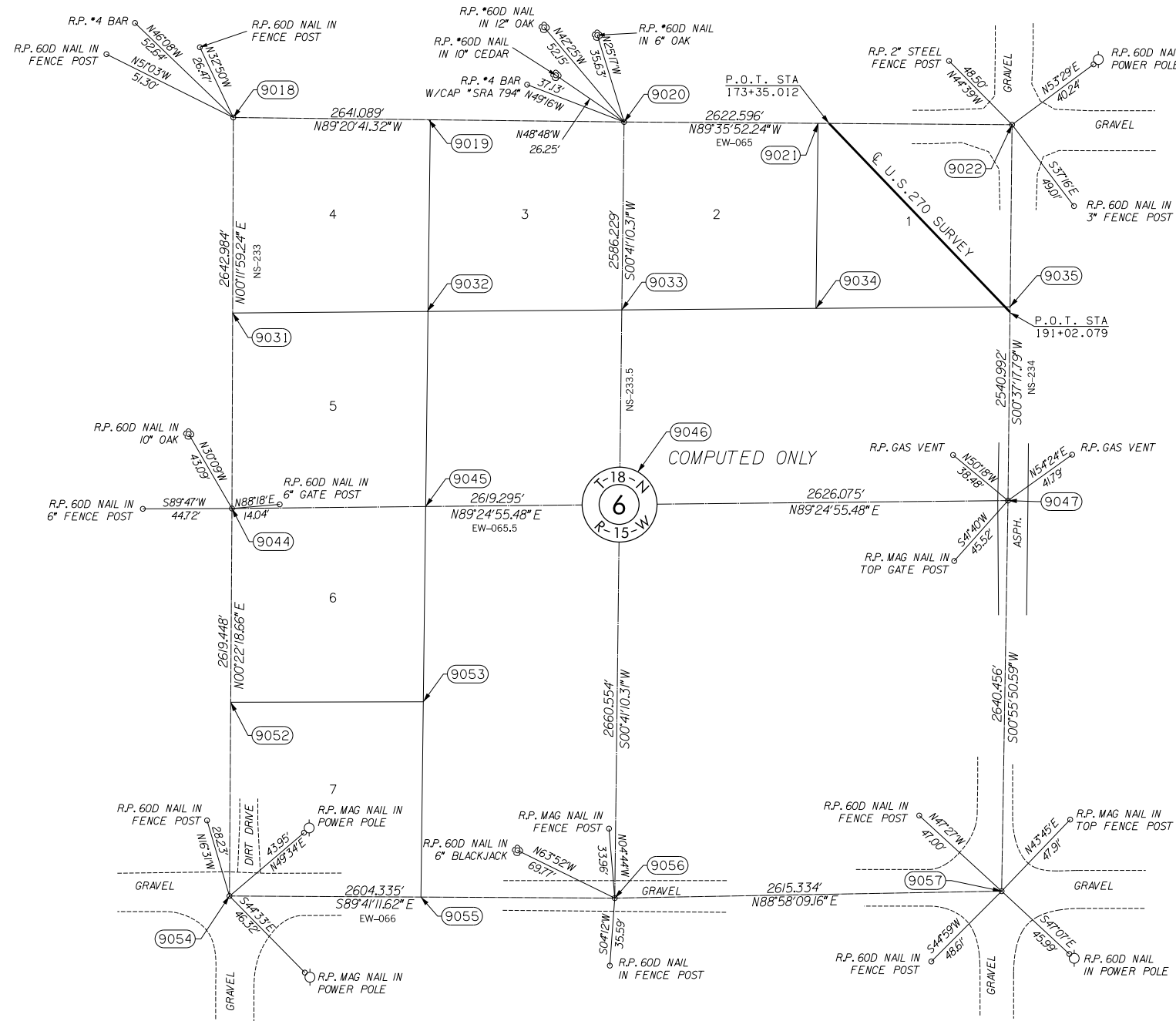
SECTION CORNER - O.D.O.T. D-22-472
 SET A #4 BAR WITH "CA 2054" CAP FOR CORNER.
 LOCATION WAS RE-ESTABLISHED BY USING EXISTING FENCE LINES RUNNING EAST WEST AND 33 FEET WEST OF FENCE CORNER POST. NO OKLAHOMA CERTIFIED CORNER RECORD WAS ON FILE FOR THIS LOCATION.

SECTION CORNER - O.D.O.T. D-22-473
 FOUND AND ACCEPTED A #3 BAR. LOCATION IS IN AGREEMENT WITH OKLAHOMA CERTIFIED CORNER RECORD FILED IN 1979. ONE REFERENCE MONUMENT WAS FOUND AND VERIFIED.

SECTION CORNER - O.D.O.T. D-22-476
 FOUND AND ACCEPTED A BENT #4 BAR. LOCATION IS IN AGREEMENT WITH OKLAHOMA CERTIFIED CORNER RECORD FILED IN 1992. THE REFERENCE MONUMENTS WERE FOUND AND VERIFIED.

SECTION CORNER - O.D.O.T. D-22-478
 FOUND AND ACCEPTED A #4 BAR. LOCATION IS IN AGREEMENT WITH OKLAHOMA CERTIFIED CORNER RECORD FILED IN 2010 AND IS IN HARMONY WITH EXISTING IMPROVEMENTS. THE REFERENCE MONUMENTS WERE FOUND AND VERIFIED.

SECTION CORNER - O.D.O.T. D-22-477
 FOUND AND ACCEPTED A 1" METAL BAR. LOCATION IS IN HARMONY WITH EXISTING IMPROVEMENTS. NO OKLAHOMA CERTIFIED CORNER RECORD WAS ON FILE FOR THIS LOCATION.



SCALE:
 1" = 500'

NOTE: REFERENCE'S SHOWN ARE NOT TO SCALE.

OKLAHOMA DEPARTMENT OF TRANSPORTATION SURVEY DIVISION	
PLS	KH
DRAWN	CF,SK
CHECKED	KH
APPROVED	KH
CREW	JH,SA,BH,DR

SURVEY DATA SHEET

SWO 4600 (1) PROJECT NO. 17671(34) SHEET NO. 30